

Save money on your prescription charges

If you need more than 14 prescription items a year, or 4 prescription items over a 3 month period, you could save money with a Prescription Prepayment Certificate (PPC).

You can buy a 3 or 12 month PPC which works like a season ticket.

If you have 3 items prescribed a month, an annual PPC could save you approximately €260.

For more information, please speak to the local medical centre team who will be able to issue a Prescription Prepayment Certificate.

Prescription Prepayment Certificates are charged in line with the NHS prescription charges guidance (England). Currently a three month PPC is **£29.10** and a 12-month certificate is **£104.00**. This is converted into euros at the Forces Fixed Rate (FFR), if you wish to pay in euros.

If you already have a Prescription Prepayment Certificate from the UK, you can carry on using this in SHAPE for the period of its validity. However, certificates issued in SHAPE are not valid for use in the UK.

You will be required to pay for your prescription charge, including 3 and 12-month Prescription Prepayment Certificates (PPCs) within 10 working days. A reminder will be sent to non-payers after 30 working days. Further recovery action will be taken against subsequent non-payers.

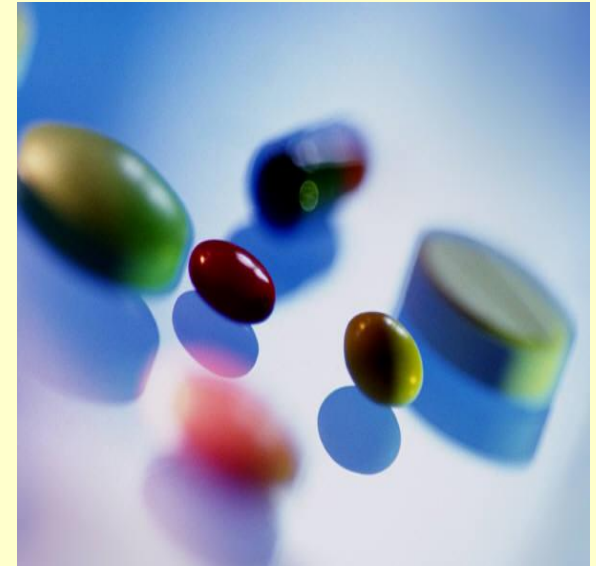
It is important that payment is made promptly in line with the payment options shown on the invoice.

Payment options are:

- Via card reader in the Pharmacy (for your convenience).
- Via direct payment in Euros into the LLP's German bank account - this can be done either on-line or in person through your Belgian bank.
- Via direct payment in Sterling into the LLP's UK bank account - this can be done either on line or in person through your UK bank.
- Via sending either a Belgian cheque (in Euros) or a UK cheque (in Sterling) to our Finance department at Haus Burgblick, Bielefeld at the address on the invoice.
- Via PayPal. For further details go to www.patient-wise.de Homepage and under: *I'm looking for...* you will find information on PayPal payments. Please remember to add marah.d@ssafa.org.uk as the email address where the prescription charge should be sent to.

Updated April 2017

Prescription Charges in SHAPE



Patient Information Leaflet

This leaflet gives you all the information you require about prescription charges, remission entitlement, Medical Exemption Certificates and Prescription Prepayment Certificates.

Are you exempt from prescription charges?

In line with DMS rules, you do **not** have to pay prescription charges if you:

- are aged 60 or over
- are aged under 16
- are aged 16, 17 or 18 and in full-time education
- are pregnant or have had a baby in the previous 12 months and have a valid maternity exemption certificate (MatEx)
- are a serving member of HM Forces
- are prescribed, free of charge, contraceptives or treatments for a sexually transmitted infection or tuberculosis
- have purchased or intend to purchase a Prescription Prepayment Certificate which is valid at the point of dispensing
- have a valid Medical Exemption Certificate or have completed a declaration indicating that you suffer from one of the medical conditions listed as providing exemption from prescription charges
- have a valid War Pension Exemption certificate and the prescription is for your accepted disability
- are named on the current HC2 Charges Certificate
- get Income Support or income related Employment and Support Allowance
- receive income based Jobseekers Allowance
- are entitled to, or named on, a valid NHS Tax Credit Exemption Certificate
- have a partner who receives Pension Credit guarantee credit

If you are from Northern Ireland; Scotland or Wales, you will still be required to pay prescription charges whilst you live in SHAPE, as you would if you lived in England.

Medical Exemption Certificates

If you have one of the conditions listed below, you will be entitled to apply for a Medical Exemption Certificate (BFGHS). If you already have a Medical Exemption Certificate from the UK, you can carry on using this in SHAPE until expiry. Certificates issued in SHAPE are not valid for use in UK.

- A permanent fistula requiring continuous surgical dressing
- A form of hypoadrenalism for which substitution therapy is essential
- Diabetes insipidus and other forms of hypopituitarism
- Diabetes mellitus, not treated by diet alone
- Hypoparathyroidism
- Myasthenia gravis
- Myxoedema or other conditions that require supplemental thyroid hormone replacement
- Epilepsy requiring continuous anticonvulsive therapy
- A continuing physical disability which means the person cannot go out without the help of another person. *Temporary disabilities do not count even if they last for several months*
- If you are undergoing treatment for cancer, including the effects of cancer and/or current or previous cancer treatments

If you have one of the above conditions, please speak to the medical centre staff to obtain an exemption form. Please apply for this as soon as possible to ensure that you do not incur individual prescription charges.

Prescription Charges

In line with MoD policy, prescription charging applies to British Forces in SHAPE. This will be done in line with NHS England guidance.

The current NHS (England) Prescription Charge is £8.60.

Serving personnel and individuals who would be exempt from paying prescription charges in England will still be exempt from charges in SHAPE. Details of who is exempt can be found on the back of your prescription.

If you are not exempt, you will be issued with an invoice indicating the number of prescription charges payable. Alternatively, you may opt to purchase a Prescription Prepayment Certificate in which case the cost of this certificate will be stipulated instead. Please follow the instructions detailed on the invoice for making payment.

Prescription Prepayment Certificates and Medical Exemption Certificates are available in line with NHS guidance. For more information, please speak to the SHAPE medical centre team.

Charges will be converted into Euros (€) at the Forces Fixed Rate.